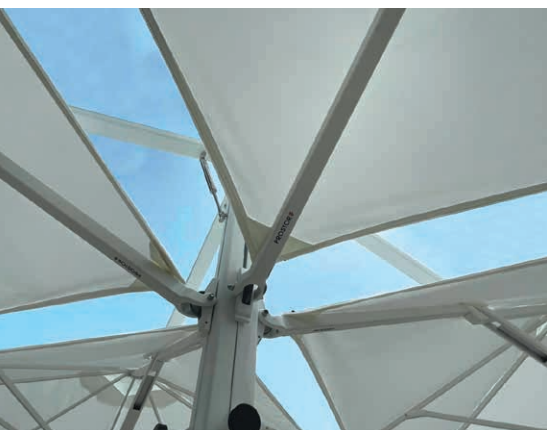




side pole umbrella

PROSTOR P6

The Prostor P6 is a highly functional and modular parasol with up to 38 m² coverage. The pole can support up to 4 parasols and opens in 5 seconds. Equipped with heating and LED lighting, it's suitable for hospitality and private use. Featherlight to use, the P6 can be mounted on a wall and offers everlasting sun protection.

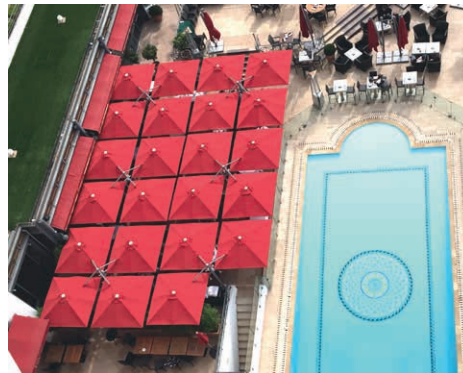








features



Endless shade pleasure

One umbrella system can cover an area of up to 38 m², allowing you to cover sizable terraces while minimizing the loss of valuable space, all while maintaining a stylish aesthetic.



Up to 4 parasols on one pole

The Prostor P6 is a highly functional and modular parasol with up to 38 m² coverage. The P6 is suitable for hospitality and private use.



Durable alu parts

We guarantee everlasting sun pleasure thanks to the durable aluminum parts. All parts are individually replaceable.



Easy opening in 5 seconds

You don't have to be strong to operate the P6 umbrella. The patented One Move System helps you to open or close the umbrella easily in one movement. The umbrellas are featherlight to handle, thanks to the stainless steel gas spring.



Option wall-mounted for optimal space use

Our umbrellas can be easily mounted on the wall freeing up valuable space on your terrace for extra tables and seats. When closed the umbrella is nicely stored against the wall.



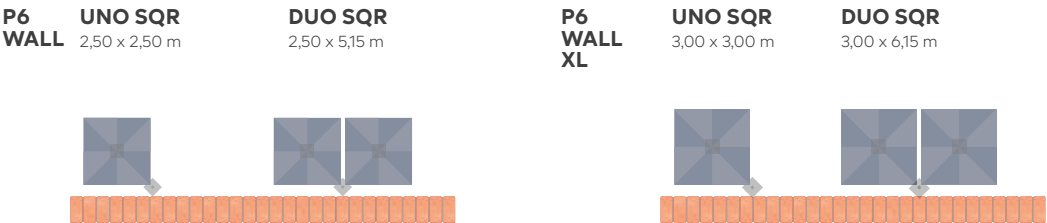
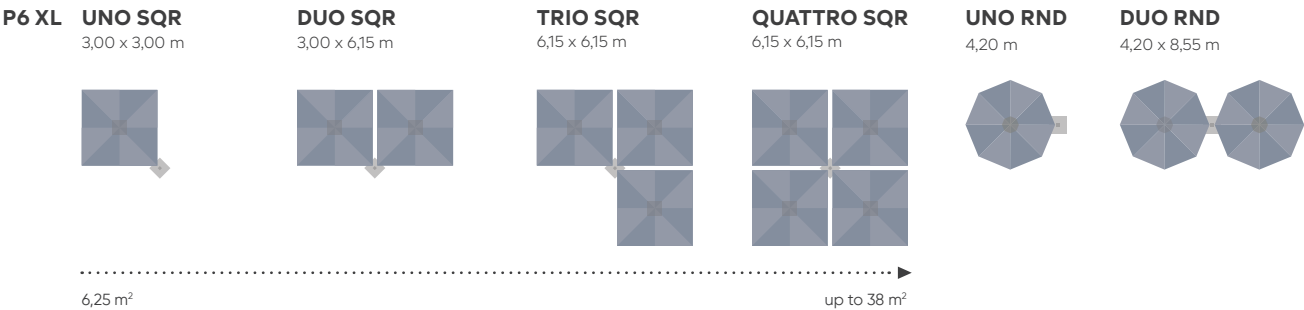
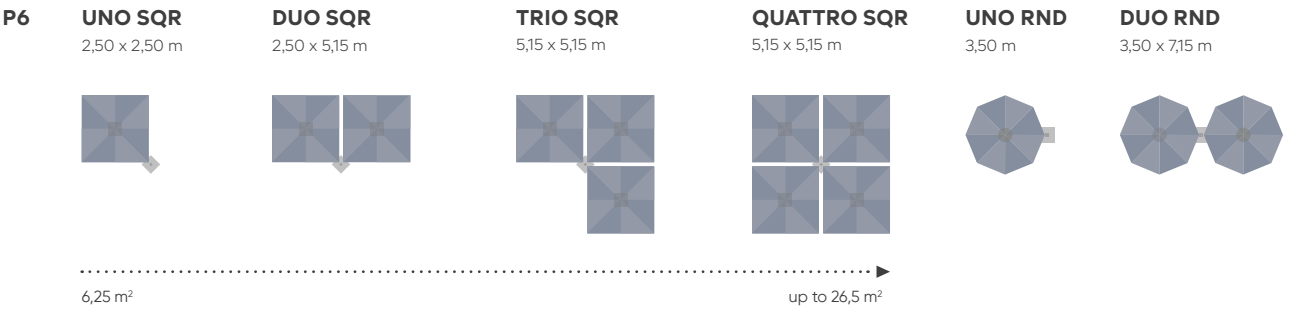
Opening above the table

No need to move the table while closing or opening the umbrella. The umbrella opens or closes above standard tables and chairs.

PROSTOR P6

DIMENSIONS

SCAN QR CODE
FOR PRODUCT
VIDEO



COLOURS FRAME & POLE



COLOURS FABRIC

STANDARD RANGE



acryl 100% solution-dyed

weight 290g/m²

colourfastness 7-8 / 8 (standard ISO 105 B04)

waterproof >300 mm water column

maintenance all fabric can be washed and replaced

PREMIUM RANGE



acryl 100% solution-dyed

weight 320/m²

colourfastness 7-8 / 8 (standard ISO 105 B04)

waterproof >360 mm water column

maintenance all fabric can be washed and replaced

ACCESSORIES



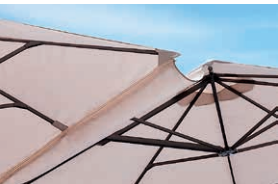
LED white



coloured LED (RGB)



electric IR heathing



rain gutter



deluxe protection cover



printing of canopy



swivel wheels only for P6 UNO

FIXATIONS



GROUND ANCHOR

Adjustable ground anchor
Recommended to align
multiple sets, it gives you
up to 15° tolerance to the
left and right.



FLOOR PLATE

50 x 70 cm
Must be chemically
anchored



FLOOR PLATE

70 x 70 cm
Must be chemically
anchored



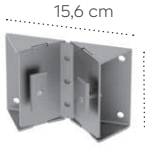
STEEL BASE

80 x 80 x 12 cm
With 12 tiles: 200 kg
Does not include tiles



STEEL BASE

100 x 100 x 10 cm
With 8 tiles: 270 kg
Does not include tiles



2 BRACKETS

The P6 pole can be mounted
on the wall with 2 brackets,
providing sun protection
without the pole or steel base
being in the way. This feature
is not available for the Round
(RND) version.